



# Metropolitan Pump Company **2024 LINE CARD**



[METROPUMP.COM](http://METROPUMP.COM)



# Index

Residential	Page 1
Commercial, Industrial & Municipal	Page 2-7
Motors & Drives	Page 8
Control Panels & Alarms	Page 9
Waterwell & Filtration	Page 10-11
Check Valves & Valves	Page 12
Basins & Covers	Page 13-14
Fire Suppression	Page 15
Rainwater Harvesting	Page 16
Accessories	Page 17-18
Sales Territories	Page 19
Contact	Page 20



# Residential

- Sump Pumps
- Effluent Pumps
- Sewage Pumps
- Grinder Pumps
- Utility Pumps
- Sand & Trash Handling
- Heating
- Hot Water Circulation
- Rainwater Harvesting
- Condensate Pumps
- Battery Backup Systems
- Accessories



 **PENTAIR** MYERS



 **PENTAIR** HYDROMATIC



**TSURUMI** Canada



**GRUNDFOS** 



**BARNES**<sup>®</sup>  
by **CRANE** PUMPS & SYSTEMS



**ZOELLER**   
PUMP COMPANY



**Liberty Pumps**<sup>®</sup>



 **GOULDS**  
WATER TECHNOLOGY



**Little GIANT**



# Commercial, Industrial & Municipal



## Franklin Electric

- Wastewater Pumps & Packages
- Surface Pumps & Packages
- Booster Pumps & Packages
- Submersible Motors & Turbines
- Drives & Protection



## LittleGIANT

- Utility Pumps
- Magnetic Drive Pumps
- Small Submersible Pumps
- Specialty Pumps



## PIONEER PUMP

- Standard Centrifugal
- Self-Priming
- Vacuum-Assisted Priming
- Recessed Impeller
- Electric & Diesel Packages



## STANCOR®

- Dewatering Pumps
- Solids-Handling Pumps
- Specialty Material
- Oil Minder System
- OverWatch Pump System



## BJM Pumps®

- General Dewatering Pumps
- Sand, Sludge & Slurry Pumps
- Solids-Handling Pumps
- Hydraulic Pumps
- Corrosion-Resistant Pumps
- High-Temperature Pumps
- Explosion-Proof Pumps
- High-Head Dewatering Pumps



## TSURUMI <sup>Canada</sup>

- Mining Pumps
- Engine-Driven Pumps
- Utility Pumps
- Submersible Pumps



# Commercial, Industrial & Municipal



## PENTAIR HYDROMATIC

- Solids-Handling Pumps
- Grinder Pumps
- Self-Priming Pumps
- Sewage Ejector Pumps
- Accessories



## PENTAIR BERKELEY

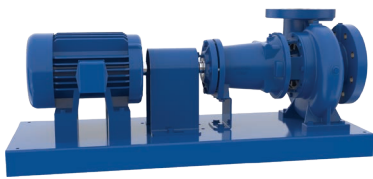
- Irrigation Pumps
- Vertical Line Shaft Turbine
- Vertical Multistage Pumps
- Centrifugal Pumps
- Drives & Protection



## PENTAIR MYERS

- Solids-Handling Pumps
- Grinder Pumps
- Explosion-Proof Pumps
- Reciprocating Pumps
- Centrifugal Pumps
- Accessories

Commercial Industrial



## PENTAIR AURORA

- Irrigation Pumps
- Vertical Line Shaft Turbine
- Vertical Multistage Pumps
- Centrifugal Pumps
- Drives & Protection



## GRUNDFOS

- Hot Water Recirculation
- Pressure Boosting
- Water Disinfection
- Wastewater
- Process Liquids Transfer
- Wash & Clean
- Industrial Process Water Treatment
- Industrial Supply Water Transfer



## BRINKMANN PUMPS

- Machine Tool Coolant Supply
- Chip-Handling Lifting Pumps
- Plastic & Miniature Pumps
- Centrifugal Pumps



# Commercial, Industrial & Municipal



## BARNES®

by **CRANE** PUMPS & SYSTEMS

- **SITHE** Chopper Pumps
- **RAZOR** Grinder Pumps
- **BLADE** Grinder Pumps
- SH Non-Clog Pumps
- Premium Efficient **envic**®
- Dry Run **envic**®



## DEMING®

by Crane Pumps & Systems, Inc.

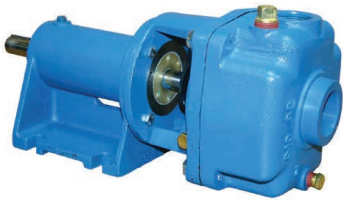
- NSF 61/372 Single Split-Case
- End Suction Pumps
- Inline ANSI Pumps
- Series 5060 Split Case Pumps
- Vertical Process Pumps
- Column & Non-Clog Pumps



## WEINMAN®

by Crane Pumps & Systems, Inc.

- End-Suction Pumps
- Condensate Return Systems
- High-Volume Vertical Inline
- L/LVM/JD Split-Case Pumps
- NSF 61/372 Pumps



## burks®

by Crane Pumps & Systems, Inc.

- Regenerative Turbine Pumps
- Vertical Inline Pumps
- Condensate Return Systems



## PROSSER®

by Crane Pumps & Systems, Inc.

- Dewatering Pumps



## CROWN®

by Crane Pumps & Systems, Inc.

- Self-Priming Solids Handling
- B Series Self Priming Pumps



# Commercial, Industrial & Municipal



- Commercial Duty Pumps
- Heavy-Duty Solids Handling
- Grinder Pumps and Systems
- Low Pressure Sewer Systems
- Explosion-Proof Motors
- Panels & Accessories
- Vertical Turbine Pumps



- Agriculture Irrigation Pumps
- Booster Pumps
- Livestock Operation Pumps
- Car Wash Operation Pumps
- Drives and Controls



- Agriculture Irrigation Pumps
- Livestock Operation Pumps
- Submersible Pumps
- Vertical Turbine Pumps



- Hygienic Pumps
- Spur Gear Pumps
- Vane Pumps
- Liquid Specific Pumps
- Universal Pumps
- Motor Speed Pumps



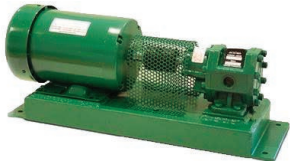
- General Water & Slurry AOD
- Hazardous Location AOD
- Chemical & Acid Resistant AOD



- Diaphragm Pumps
- Sliding Shoe Pumps
- Rotary Lobe Pumps
- Marine Pressure Sets
- Bilge Treatment Systems
- Oil Dispersant Spray Systems
- Oil and Effluent Recovery Units
- Oil Skimmers
- Oil-Water Separators
- Oil Spill Trailers
- Floating Booms
- Versimat Bulk Oil Sorption
- Truxor Amphibious Tool
- Salaroll Pump
- Flexible Impeller Pumps



# Commercial, Industrial & Municipal



- Self-Priming Centrifugals
- Cast Iron G&H Generation
- Bronze Rotary Gear Pumps
- HT-Series Hydrostatic Test Pumps
- A-Series Gear Pumps
- Stainless Steel Gear Pumps
- Excess Pressure Pumps
- SRWP-Series Semi-Rotary Pumps

- Air Operated Diaphragm Pumps
- Food & Beverage / Sanitary Pumps
- Heavy-Duty / Signature Series Pumps
- High-Pressure Pumps
- Oil & Gas Pumps
- Standard Duty / Evolution Pumps
- Submersible Pumps

- Chemical Metering
- Conductivity Controllers
- pH/oPR Controllers
- Accessories



- Self-Priming Centrifugal Pumps
- Multistage Pumps
- Drainage Pumps
- Wastewater Lift Pumps
- Construction & Mining Pumps
- Circulators
- Pressure Booster & Firefighting







# Commercial, Industrial & Municipal



## Blue-White®

- Chemical Metering Pumps
- Conductivity Controllers
- pH/oPR Controllers
- Accessories



## AMT®

A Gorman-Rupp Company

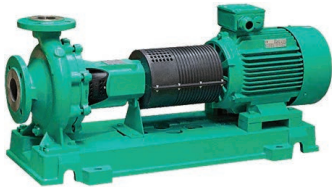
- Engine-Driven Pumps
- Diaphragm Pumps
- Firefighting Pumps
- Pedestal Drive
- Self-Priming Centrifugals
- Submersible Pumps
- Coolant Pumps
- Specialty Pumps



## PROCON®

custom | fluid | solutions™

- Standard Vane Pumps
- Magnetically-Coupled
- Micro Vane Pumps
- Gear Pumps
- Accessories
- Motors



## wilo®

- Cooling Water Circulation
- Heating Circuits
- Raw Water Intake
- Water Supply
- Firefighting
- Water Treatment
- Sewage Disposal



## Scot Pump

A WILO COMPANY

- Stainless Steel Close-Coupled
- Elite Cast Iron Close-Coupled
- All Bronze Close-Coupled
- Specialty Products



## AMERICAN-MARSH PUMPS

A WILO COMPANY

- Gear Pumps
- End-Suction Pumps
- Vertical Inline Pumps
- Vertical Pumps
- Non-Clog Pumps
- Double-Suction Pumps
- Multistage Pumps
- Regenerative Turbine
- Vertical Turbine Pumps



# Motors & Drives

- Cast Iron TEFC Motors
- Hazardous Duty Motors
- EC Induction Motors
- Custom Induction Motors
- Wound Rotor Induction Motors
- Explosion Proof / DIP
- General Purpose ODP / TEFC
- Severe Duty
- Water Jacket Cooled Motors
- Drilling Motors
- Mining Line
- Brake Motors
- Definitive Purpose
- Farm Duty
- Stainless Steel Motors
- Variable Frequency Drives
- Pump Starters
- Pump Soft Starters
- 4" - 12" Submersible Motors
- 10" & 12" Rewindable-Submersible Motors





# Control Panels & Alarms

- Custom control panels for wastewater, irrigation, purification, booster systems, boiler feeds, condensate systems, cooling towers & variable speed controls
- High/Low level Alarm Systems (Indoor, Outdoor & Wifi)
- Magnetic Starters
- Reduced Voltage
- Specialty Enclosures
- PLC Systems
- Timed Dose / Demand Dose





# Waterwell & Filtration

- 4" & 6" Submersible Pumps
- High-Capacity Pump Ends
- 6" to 12" Turbine Pump Ends
- Motors, Controls & VFD's
- Jet Pumps
- Centrifugal Pumps
- Booster Pumps & Systems
- Turf & Irrigation Pumps
- Pond & Fountain Pumps
- Sprinkler Pumps
- Housings
- Filter Cartridges
- Filter Bags
- Poultry Pumps
- Membranes
- Water Distribution Components
- Treatment Systems
- Risers
- Pressure Tanks
- Water Softeners
- RO Systems



 **PENTAIR** BERKELEY



 **PENTAIR** MYERS



**GRUNDFOS** 



 **PENTAIR** WELLMATE



 **Franklin Electric**



 **FLEXCON**  
INDUSTRIES



# Waterwell & Filtration

- 4" & 6" Submersible Pumps
- High-Capacity Pump Ends
- 6" to 12" Turbine Pump Ends
- Motors, Controls & VFD's
- Jet Pumps
- Centrifugal Pumps
- Booster Pumps & Systems
- Turf & Irrigation Pumps
- Pond & Fountain Pumps
- Sprinkler Pumps
- Housings
- Filter Cartridges
- Filter Bags
- Poultry Pumps
- Membranes
- Water Distribution Components
- Treatment Systems
- Risers
- Pressure Tanks
- Water Softeners
- RO Systems





# Check Valves & Valves

- Sump Pump Check Valves
- Sewage Pump Check Valves
- Swing Check Valves
- Ball Check Valves
- Compression Check Valves
- Full-Flow Unichecks
- Heavy Duty Valves

- Inline Check Valves
- Quiet Check Valves
- Tri-Check & Combo Valves
- Swing Check & Ball Combo
- Clear Check Valves
- Cast Iron Valves

- Butterfly Valves
- Gate Valves
- Air Release Valves
- Control Valves
- Knife Gate Valves
- Plug Valves
- PVC Check Valves





# Basins & Covers

## AK INDUSTRIES, INC.



### AK Poly

- Horizontal Leg Tank (NSF Approved)
- Pump Jon System
- Roll-Top Poly Basins
- Radon Prevention Systems
- Poly Sump & Sewage Basins & Covers
- Pre-Assembled Packages
- Water Boxes & Sink Trays
- Septic & Pump Tanks
- Perforated & Corrugated Poly Basins
- Poly Triple Garage Basins
- Basin Extensions

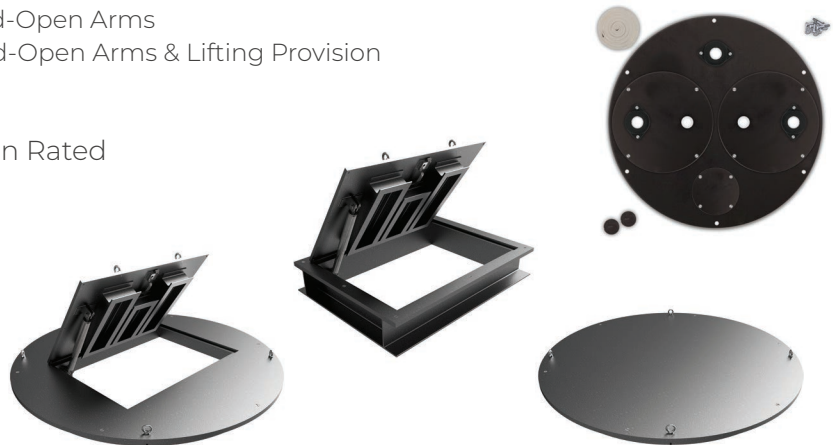


### AK Fiberglass

- Standard Fiberglass Basins - Stock
- Standard Basin Covers - Stock
- Fiberglass Basin Extensions - Stock
- Custom Size Fiberglass Basins
- Special Resin Fiberglass Basins
- Prefabricated Lift Stations
- Fiberglass Triple Garage Basins
- Detached Valve Box
- Ladders & Platforms

### AK Covers

- H2O Hatch Covers w/ Spring Assist & Hold-Open Arms
- H2O Hinged Covers w/ Spring Assist, Hold-Open Arms & Lifting Provision
- H2O Solid Covers
- Fiberglass Covers
- Standard Steel Checkerplate Pedestrian Rated
- Fiberglass Covers
- Aluminum Covers
- Stainless Covers
- Epoxy-Coated Covers
- Simplex & Duplex Covers
- Safety Grates
- Custom Covers





# Basins & Covers



- Sump & Sewage Basins & Covers
- Radon Prevention Systems
- Pre-Assembled Packages
- Water Boxes & Sink Trays
- Perforated Basins
- Septic Tank Riser Covers
- Drainage Covers
- Sump Stick



- Closed-Top Storage Tanks
- Open-Top Storage Tanks
- Secondary Containment Basins
- Double-Wall Storage Tanks
- Potable & Chemical



- Aluminum & Steel Floor Access
- Special Application Floor Access
- "For Finished Flooring" Floor Access
- Manholes (H2O & Pedestrian)



- Poly Tanks
- Potable Water Tanks
- Chemical Tanks
- Sewage Tanks'

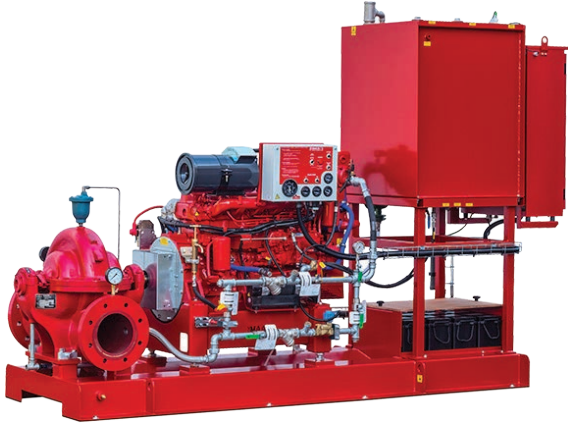


- Poly Tanks
- Potable Water Tanks
- Chemical Tanks
- Sewage Tanks'



- Aluminum & Steel Floor Access
- Utility Vault Doors
- Architectural Products
- Basin Covers
- Fall-Through Protection
- Pump Station Accessories
- Custom Fabrication
- Metal Grating
- H2O & Pedestrian
- Lifting Hoists





## PENTAIR FAIRBANKS NIJHUIS

- Horizontal Split Case Fire Pumps
- Vertical Split Case Fire Pumps
- Vertical Inline Fire Pumps
- End Suction Fire Pumps
- Vertical Turbine Fire Pumps
- Complete Packaged Systems
- Electric Fire Pump Controllers
- Diesel Engine Fire Pump Controllers
- Variable Speed Fire Pump Controllers
- Medium Voltage Fire Pump Controllers
- Jockey Pump Controllers
- Remote Alarm Panels
- Low Water Level Lockout Panel
- Low Water Pressure Lockout Panel
- Fire Pump Controllers for Foam Suppression



## TALCO FIRE SYSTEMS

- Home Hydrant
- Residential Fire Pumps
- Underground Delivery System
- FFX NitroPower System
- Commercial Fire Pumps
- Complete Packaged Systems
- Galvanized NFPA 22 Tanks



# Rainwater Harvesting

## Rain Source

A Division of Metropolitan Pump



### Available Products

- Purpose-built proprietary submersible rainwater pump systems with pressures to over 300 PSI
- Non-potable booster pump skids with pressures to over 300 PSI and flows up to 800 GPM
- Skid-mounted treatment systems designed to CSA B-805 Standards for all applications
- City water back-up systems complete with solenoid, backflow preventer and flow meters
- Rainwater Harvesting control panels (optional PLC/HMI)
- Purpose-built packages for drip irrigation, spray irrigation, toilet flushing, sub-surface infiltration, cooling towers and more
- Complete packaged systems with all components mounted on skid, eg. booster pump, control panel, treatment systems, etc.
- Modular designs using proven components – systems can be supplied as one large skid or broken down into smaller sections for installation where space is limited
- Cistern Tanks (fiberglass, concrete, modular, polyethylene)
- Day Tanks
- Self-cleaning filters, bag filters, cartridge filters, media filters, carbon filters, UV sterilizers, chlorine injection, ozone injection





# Accessories



- Vertical Base-Elbow Rail System
- Horizontal Base-Elbow Rail System
- Cast-Iron, SS, Explosion-Proof
- Pump Adapter Flanges
- Pull-Out Flanges
- Straight-Through Horizontal Fittings
- Float Brackets
- Fittings



## **AK INDUSTRIES, INC.**

- Adapta-A-Flex Rubber Hubs
- Cast Iron Caulking Hubs
- Stainless & Nylon Couplings
- Link-Seal Modular Seal
- Flexible Entry Boot
- PVC & Combo Hubs
- Discharge Fittings
- Vent Fittings
- Cord Grommets
- Cover Gasket Packs
- Ladders
- Rail Systems



- Discharge Fittings
- Vent Fittings
- Snap-In-Hub
- Coupling Flanges (Cast & Plastic)
- Cord Grommets
- Combo Hubs
- Cover Gasket Packs
- Freeze Drain
- DrainTrap



- SS & Galvanized Chain Packages
- Hanger Brackets
- Gasket Kits



# Accessories



## MDI

- Mini Floats
- Mechanical Floats
- PiggyBack Floats
- Narrow Angle Floats
- Heavy-Duty Floats
- Pilot-Duty Floats
- Gold-Plated Floats
- High-Amp Floats
- High-Temp Floats
- Dual-Float Alarm Systems
- Avocado Floats
- Optical Floats
- Stainless Steel Floats
- Sway Rings
- Internally-Weighted Tetherless Floats
- Vertical Floats (Custom Rod Lengths Available)
- Clamps
- 3-Pole Definite Purpose Relays



## SJE RHOMBUS

- PumpMaster®
- Double Float® Master
- AmpMaster®
- VerticalMaster®
- MicroMaster®
- Junior Super Single®
- HiTempMaster™
- Cable Weights
- Reed Switches
- Elapsed Time Meters
- Pipe Mounting Bracket
- Float Brackets



## KEYENCE

- Flow Meters
- Liquid Pressure Sensors
- Temperature Sensors



## NOLTA

- Level Controls
- Class 1 Div. 1
- Level Electrode



## Seametrics

- Flow Meters
- Liquid Pressure Sensors
- Temperature Sensors



## SIEMENS

- Transducers
- Ultrasonic level transmitters



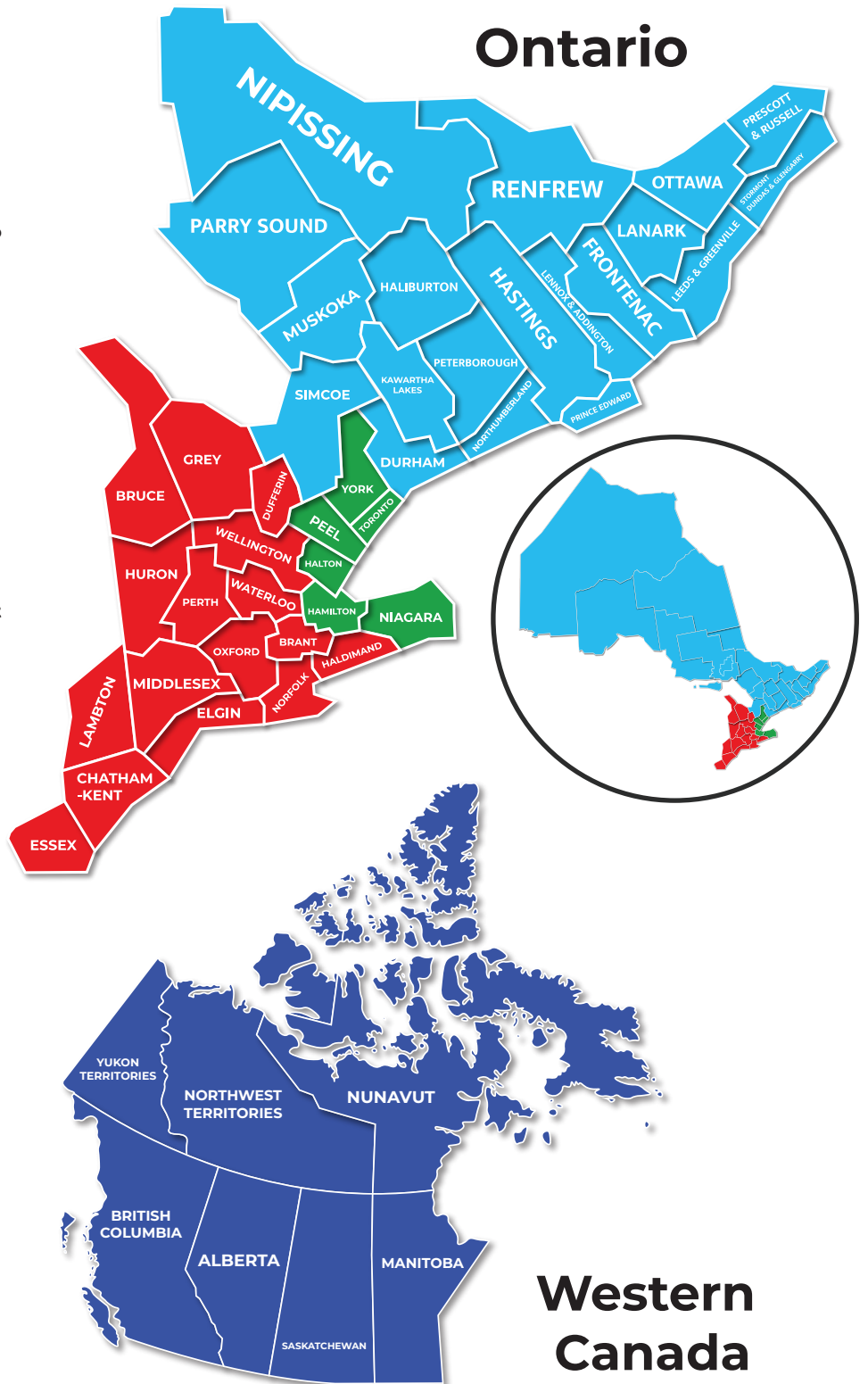
# Sales Territories

**Ryan Wilkins**  
 Regional Sales Rep, Southwestern Ontario  
 Mobile: (519) 504-8287  
 ryan@metropump.com

**Jasper Belding**  
 Regional Sales Rep, Greater Toronto Area  
 Mobile: (416) 819-1104  
 jasper@metropump.com

**John Doner**  
 Director of Sales & Business Development  
 Mobile: (519) 317-9149  
 john@metropump.com





**Jeff Kelly**  
 Regional Manager, Western Canada  
 Mobile: (403) 354-4002  
 jeff.kelly@metropump.com









# Contact us

## Metropolitan Pump Co. Limited Head Office

-  475 Thompson Drive, Cambridge, ON N1T 2K7
-  (519) 886-5710
-  [QUOTES@metropump.com](mailto:QUOTES@metropump.com) | [ORDERS@metropump.com](mailto:ORDERS@metropump.com)
-  [WWW.METROPUMP.COM](http://WWW.METROPUMP.COM)

## Metropolitan Pump Co. Limited West

-  18051 111 Ave NW #2, Edmonton, AB T5S 2P2
-  (780) 408-8045
-  [QUOTESWEST@metropump.com](mailto:QUOTESWEST@metropump.com) | [ORDERSWEST@metropump.com](mailto:ORDERSWEST@metropump.com)
-  [WWW.METROPUMP.COM](http://WWW.METROPUMP.COM)



**METROPUMP.COM**

Follow us for updates, educational content & more!



**@metropump**



**Metropolitan Pump Co. Limited**